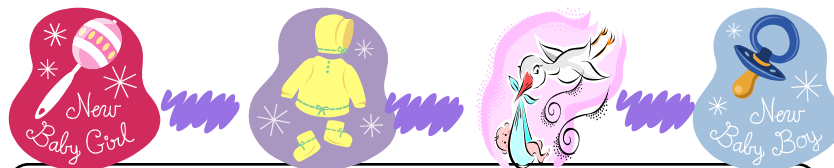


Prenatal Education Class Schedule 2015

Childbirth Education	Breastfeeding Class Sibling Class
January 5 & 12 March 2 & 9 May 4 & 11 July 6 & 13 September 14 & 21 November 2 & 9 No Charge	Call to set up your one-on-one breast feeding or sibling class at no charge to you at 715-822-6284.

**Arrangements will be made for those who are
unable to attend stated times.**



**Please call Kelly at 715-822-6284
to register for classes.**

